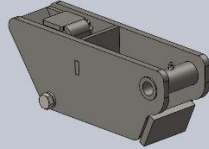
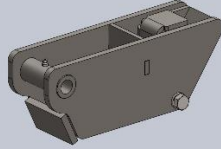
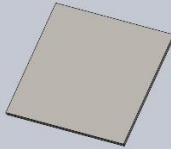
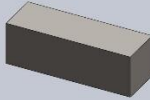




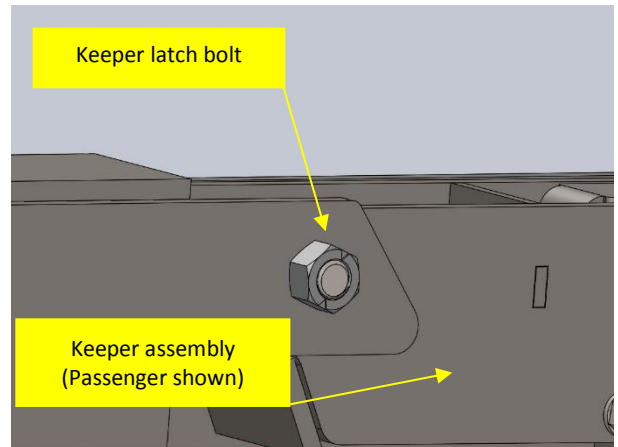
REEL LIFT KEEPER LATCH RETROFIT GUIDE

This guide will assist you to retrofit the old pin style Keeper latch assemblies to the new latch assemblies. Welding and grinding will be required on two part placements. Parts included are:

Item No.	Description	
1	Keeper – Driver Side	
2	Keeper – Passenger Side	
3	Filler Plate	
4	Weld Tab	

1. Remove old Keeper Latch assemblies (driver and passenger sides) by removing the bolt holding them in place. Figure 1

Figure 1



1. Reinstall new Keeper latch assemblies (**Items 1 & 2**) and tighten the nut enough to allow the Keeper latch assemblies to freely close.

2. Place the filler plate (**Item 3**) covering the slot in the angled face of the end cap as shown and weld at the places indicated by the blue lines. Grind the inside weld flush with the face of the filler plate to allow the new Keeper latches to close properly. Figures 2 & 3

Figure 2

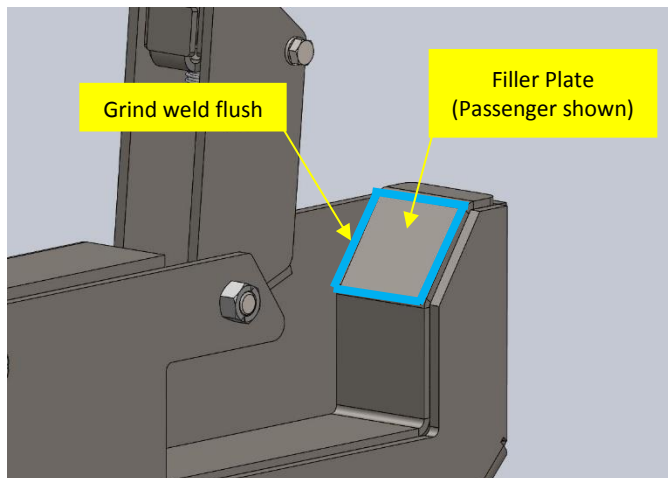
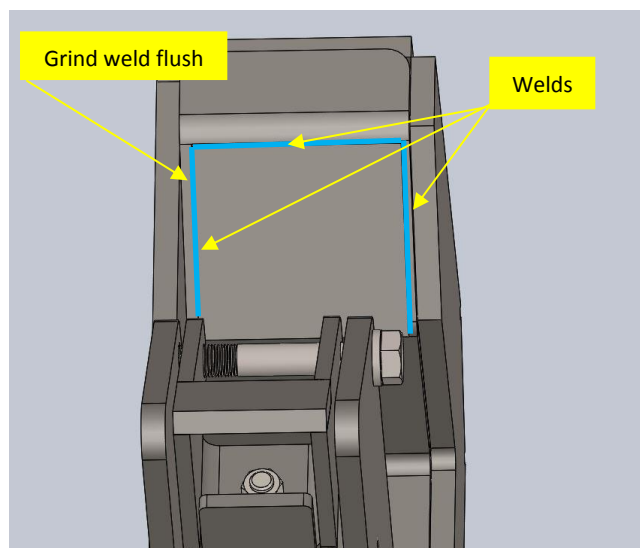


Figure 3



3. Close the Keeper latch assembly and depress the top of it. Center and place the Weld Tab (**Item 4**) at the front edge of the Keeper latch assembly and on the welded Filler Plate. Insert the provided spacer between the weld tab and the latch assembly and weld the tab onto the Filler Plate along the top edge and both sides. Do not weld the bottom edge of the tab.

Figure 4

